

# Alpha base

User Manual  
Benutzerhandbuch  
Manual d'utilisation  
Modo de uso  
Manuale di istruzione  
Uživatelská příručka





3. .... English  
41. .... Français  
77. .... Italiano

21. .... Deutsch  
59. .... Español  
93. .... Czech

## Index

4.....**Short Instruction / Contents**

5 - 6.....**Product Features**

6 - 8.....**Installation / On / OFF / Pairing**

9 -13..... **Menu**

Operation / Telephone Book / Telephone Book Reading / To skim through the telephone directory / Telephone Telephone Book Delete / Missed Calls / Received calls / Dialed Numbers Hotkey-Funktion

13 - 15.....**Reverse the LCD**

Stereo-Mode AV-Function / AV-Funktion with handset / AV-Function with other Bluetooth-Devices / Utility samples

15 - 17.....**Connect the Dongle and PC with Alpha**

Volume Adjustment / Take a call / reject a Call / Microphone Mute / Voice Dial Redial / Private Speech, pass a Call to Handset

17 - 19.....**Battery Status**

Charge the battery / Battery Notice and Warning

19 - 20 ....**Warranty**

## **Short introduction in the wireless technology Bluetooth.**

Bluetooth is a wireless communication technology with short range. It enables a wireless communication between devices with Bluetooth interfaces, such as Mobile Phones, Personal Digital Assistants (PDA), Desktops and Notebooks, input / output devices ( mouse, keyboard, printer) and domestic appliances. Bluetooth complies with the world wide standards for radio operating in the ISM-Band (industrial, scientific and medical frequency band). Within the ISM-Band ( 2,4 GHz to 2.48 GHz) Bluetooth can jump 1,600 time per second between 79 different frequencies with a range up to 10 meters (Class II).

## **Alpha Base Bluetooth-Handsfree system**

Alpha Base is a Bluetooth - device, the newest of which has been equipped with Bluetooth technology Version 1.2. It is a multi-function device to be used in car, office and for leisure.

### **Contents**

- Alpha Base
- 12 / 24V car charging cable
- 3 rechargeable AAA -NiMH Power batteries
- Visor clip
- User manual

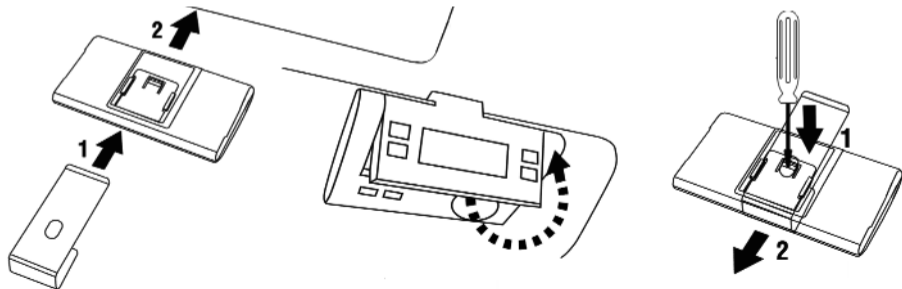
## **Products Features:**

- Bluetooth V1.2 ( Class II ) is compatible with the Headset- and Handsfree - Profile
  - Adaptive Frequency Hopping ( AFH ). Less susceptible to interference.
  - Data rate 723 Kbps
  - Extensive reduction of disturbance from other radio technology, eg. WLAN
- A2DP / AV Stereo profile
- Class II 10 Meters range
- Phone book function for downloading of 600 Numbers
- Automatically downloading by AT command or one by one by OPP
- User friendly Menu oriented software
- Multi Connecting / up to 3 mobile phones can be used simultaneously
- Hotkey function
- 16 Memories for each of the missed, received and dialled calls
- Multilanguage 4 Lines with 18 Characters per line LCD display, caller's number and name will be displayed on it when the call is being received, if supported from Handset.
- 2 Watts Speakers
- Swivel LCD display to fit the right view angle of user up to 190°.
- Supports voice dialling, if supported from Handset
- Re-dial of the last dialled phone number.
- DSP (Digital Signal Processor ) to decrease noise and echo.
- Full Duplex
- Display of the state of charge of the battery.
- Rechargeable AAA NiMH batteries
- Supports different music sources ( stereo Music player and Mobile Phone)
- Compatible with all Bluetooth Devices.

- Firmware-Upgrading Interface
- Talk time is for up to 8 hours (depending on type of operation.)
- Stylish German Design
- Size: 120mm wide x 93mm deep x 23mm height

### **Installation**

- Open the battery compartment and insert the 3 rechargeable batteries. Close the battery compartment  
**Battery note:** Please charge the batteries for a minimum of 6 Hours before using for the first time.
- Start the pairing process (as describe further down) between the Alpha Base and your Mobile Phone.
- Fasten the sun screen clip at the back of the Alpha Base .
- The Alpha Base can now be clipped over the side of the sun visor.
- Adjust the LCD screen to an optimum viewing angle.



## Turning the device On/Off

### Turn ON

The Alpha Base is turned On or Off by turning the swivel display from 0 deg to 30 deg. or more

### Turn Off

To turn off the Alpha Base close the LCD swivel display and the device will turn Off automatically.

## Pairing / Multi Connecting

The Alpha Base and your mobile phone need to be paired before being used together. Two phones with hands-free profile, or 3 phones, 2 of them with hands-free profile and a mobile phone with Headset profile, can be used simultaneously.

- Swivel the LCD display 30° towards the Alpha Base to start it
- „Base“ is displayed on the screen.
- "A" and "P" show the automatic pairing mode for the mobile phone A.
- The Alpha Base automatically chooses the profile "Handsfree" or "Headset" and pairs it with your mobile phone.

### **Details of the pairing process:**

**Note** : Place your mobile phone and the Alpha Base at a distance of about 30 cm from each other.

1. Turn the Alpha Base on.
2. The pairing mode is active for the next 4 minutes. "A" (for the first mobile phone) and "P" (pairing mode) are displayed on the screen.
3. Activate your mobile phone's Bluetooth function and follow the instructions for pairing (for details, see the user manual of your mobile phone).  
Once the mobile phone finds the Alpha Base, choose the Alpha Base shown in the list of your mobile

phone. Your mobile phone will ask for a pairing code, type "1234". This code is set in the factory and cannot be changed.

4. To pair a second mobile phone, while in pairing mode, press on the key (3). "B" (for the second mobile phone) and "P" (pairing mode) are displayed on the screen. Repeat the pairing procedure for the mobile phone B.

**Note:** Some phones have to be connected and authorised after the pairing process. Please follow the instructions of your mobile phone manual to do so.

5. The Alpha Base is now paired with your mobile phone and ready to use.
6. The paired mobile phones will now be recognised by the Alpha Base (Alpha Base can memorise up to 8 mobile phones).
7. An icon "CAR" appears on the display next to the mobile phone names "A" or "B" when the Alpha Base is connected to one of the paired phones

**Important:** If the pairing process fails, repeat the process. Once the connection is successful, the Alpha Base is ready. You can then phone wirelessly, provided the Mobile Phone is properly set up.

**Note:**

1. If you don't want to pair Alpha Base with a new Mobile Phone, just leave it switched on and it will search and connect the last paired Mobile Phone automatically.
2. Adjust the Alpha Base to a comfortable level of volume.
3. Adjust the LCD screen to an optimum viewing angle.



## Base Menu

Alpha Base is very user friendly. To browse the Menu items please press the Menu Button M,(4) to get in to the Alpha Base Menu, by pressing the up and down buttons (4 and 3) you can scroll up and down menu items.

By pressing OK( 1), confirm the Menu

By pressing return (2) return to the top menu.

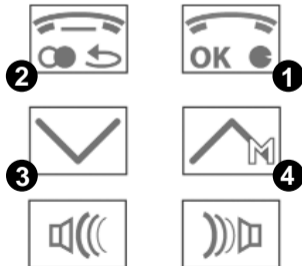
**Notice:** The Menu function works in the Stand by mode.

## Operation menu

### Main Menu

Press (Menu) Button (4) in the stand-by mode, the LCD will display the Main menu as below:

- Languages
- Phone book
  - Phone book reading
  - Phone book review
  - Phone book delete
  - Dialed out calls
  - Missed calls
  - Received calls
- To reverse the LCD reverse
- Media Player



Press button 3 or 4 to select on the main menu, and press button 1 to confirm selection, or press button 2 to get back to previous menu.

## Operation

Alpha Base can be operated in any of the six languages below.

Languages:

- |            |           |               |
|------------|-----------|---------------|
| 1. English | 3. French | 5. Italian    |
| 2. Spanish | 4. German | 6. Portuguese |

Press M (4), to select menu Language, enter "OK"(1) by using Menu up (4) or down(3) select the language, then press "OK" , the selected language will remain on the display.

## Phone book function

To use the phonebook function the mobile phone must be synchronizable with Base, have to support the 'Object to Push' or 'AT Command' and the handsfree profile. Please refer to your portable manual.

Base can store 600 contact numbers and names. The display will show Phone Book full, if more than 600 Contacts have been transferred.

**Note:** The Alpha Base display does not support special characters and umlauts..

**Note:** Only some of the Mobile Phones support this phone book data transfer function.

The Phone book transfer will not be supported by some Mobiles. If not, please send the contact names and numbers one by one via Bluetooth from the Mobile Phone to Alpha Base.

**Note:** If in the contact list there are more numbers available for the same name, the Alpha Base will store these numbers under the same name.

Press M (4) to select the menu Phone Book, press OK to get in to the sub menu, select the required function and press OK to confirm.

### Phone Book reading

Select "Reading of the directory" in the main menu and confirm with OK (1). The Alpha Base automatically synchronise with the mobile phone and downloads the data of the phone directory. The names and the numbers are stored alphabetically in the memory of the Alpha Base. This function is not supported by all mobile phones, in this case "phonebook push" appears on the Base's screen. To end this function, or after the reading of the directory, press the "return" (2) key until the mode of conversation is activated. The Base is in conversation mode when the name of your mobile telephone and a "car" icon is visible on its screen.

Some mobile phones do not support the automatic transfer of the telephone directory or take a long time or can only transmit a limited number of contacts. In this case, after having paired the Alpha Base with your mobile phone (an icon "car" appears on the screen), you can manually transfer the contacts from your mobile phone to the Base . In the mobile phone telephone directory choose the contacts to be transferred (single contacts, groups of contacts or all contacts). Send the data of the contacts by means of Bluetooth. Choose "B-Speech-Base" among the installed devices and confirm your choice. All the selected contacts are now stored directly in the telephone directory of the Base .

**Note:** In the OPP (sending of Numbers one by one via Bluetooth) Phone book transfer Mode, any time you start to read the Phone Book, the Hand free function will disconnected. The Base will return to Hand free Mode after closing the Phone book reading function. You can interrupt the Phone Book reading function at any time by pressing the Return (2) button.

### To browse through the telephone directory

Press on the M (4) key to scroll though the contacts memorised alphabetically.

The key (3) makes it possible to browse through the Alpha Base bet until the initial required appears, then use the M (4) key until the name of the required contact appears.

**P.B. review**

Select P.B. review in the Phone Book menu by scrolling up or down (press button 3 or 4) in the main menu, and press OK (button 1) for confirmation. To review the alphabetically sorted contacts press up or down (press button 3 or 4). To dial the number from the Phone book, select one of stored numbers and press OK (button 1) and it will be dialed out via the connected phone. Press return (button 2) and return to the previous menu.

**P.B. delete**

Select P.B. delete in the Phone Book menu by scrolling up or down (press button 3 or 4), and press OK (button 1) for confirmation, Alpha Base will display "Delete the phone book?", press button 1 for confirmation, or press button 2 to return to the main menu.

**Missing calls**

Select Missing Calls in the Phone Book menu by scrolling up or down (press button 3 or 4), and press OK (button 1) for confirmation, To review the Missed calls press up or down buttons (3 or 4).

To dial the Number from the Missed Call memory, select one of the stored Contacts and press OK (button 1) to dial it out via the connected phone. Press return (button 2) to return to the previous menu.

**Note:** 16 Missed calls can be memorised.

**Incoming calls**

Select Incoming Calls in the Phone Book menu by scrolling up or down (press button 3 or 4), and press OK (button 1) for confirmation, To review the Incoming calls press up or down buttons (3 or 4)

To dial the Number from the Incoming Call memory, select one of the stored Contacts and press OK (button 1) to dial it out via the connected phone. Press return (button 2) to return to the previous menu.

**Note:** 16 Incoming calls can be memorized.

### **Dialed Numbers**

Select Dialed Numbers Calls in the Phone Book menu by scrolling up or down (press button 3 or 4), and press OK (button 1) for confirmation, To review the Dialed Numbers press up or down buttons (3 or 4) To dial the Number from the Dialed Numbers memory, select one of the stored Contacts and press OK (button 1) to dial it out via the connected phone. Press return (button 2) to return to the previous menu.

**Note** : 16 Dialed calls can be memorized.

### **Hotkey function**

You can store a Number which you can then dial simply by pushing the Volume + and Volume - at same time. This function could be used to store an Emergency number or Mailbox or any other required number.

### **Storage the Hotkey Number:**

Select one of the stored numbers of phone book, press both V- and V+ buttons to set that number as the Hotkey stored number.

### **Dial the Hotkey Number:**

Press both V- and V+ buttons to dial the Hotkey number under the standby mode of Alpha Base

Note: not every handset supports Hot Key function

### **LCD upside-down**

Press Menu and scroll up or down to select the LCD Reverse Menu, Press OK (Button 1) to invert the display. This is a useful function in conjunction with use on the sun visor or when used on a table.

**Media Player, Stereo mode, AV Function**

The Alpha Base support Stereo AV Mode Profile, when connecting to a Bluetooth enabled Multimedia music Player or Handset.

Alpha Base allows you to enjoy Stereo music via Bluetooth.

Alpha Base provides 2 Watts speaker.

The AV function will be displayed on the LCD screen as a stereo Speaker Icon.

**AV Function by using a Mobile phone:**

Connect your Mobile Phone with Alpha Base (refer to Pairing menu)

Start the Music player on your Mobile Phone, and depending on your handset, the AV function will start automatically. In other cases, choose the Music player Menu on your Handset, select in the option for sending via Bluetooth. Then choose in the paired list Alpha Base, and confirm it. The music will now be sent to your Alpha Base. To stop the Music, use the Pause in the Media player or stop Music from your handset.

**AV Operation with other Bluetooth equipment**

In addition to Handset, you can pair the Alpha Base with any other Bluetooth stereo Source to enjoy the music and also utilise the Hands free communication with your Mobile Phone. You can remotely control the AV capable Bluetooth Handset. Please refer to the AV menu and press the Forward, Backward, Stop, Pause or Play button. Press the up and down buttons to select the required function. To stop the Music, use the Pause or Stop button in the Media player from your handset.

**Examples of utilisation:**

Music sources and Handset setting:

Pair the Alpha Base with your handset as mentioned before to memorise the Base in your handset.

Disconnect the paired Handset from Alpha Base, by switching off the Mobile or switching off the Bluetooth

function of the Mobile. Pair the Alpha Base with your Bluetooth capable music player eg. You can transmit the music wirelessly to the Alpha Base .

Turn on the Bluetooth Function of the Paired Handset, Alpha Base will recognize the Mobile and your Mobile will ask to confirm the connection to Alpha Base, After confirmation of connection with Alpha Base, the music will be received for the other source by Bluetooth. At any time your Mobile phone receives calls the Alpha Base will automatically interrupt the music and switch to your handset function. Once the communication is terminated, Alpha Base will automatically return to the music from the Bluetooth source.

### **Connecting the Alpha Base with a Bluetooth Dongle and PC**

If you use the IVT software, please click, "my Bluetooth". Then the Bluetooth device Discovery, on the Screen, please search for the Bluetooth devices. You will find the Alpha Base, (please make sure that Base was in the pairing mode before you effect this search, refer to the Pairing in the manual).

Enter the Pass Key "1234", confirm the pairing with the computer. After pairing the OK sign will appear on the PC screen. To enjoy the Music from your PC, please go to the media player and configure the speaker interface to "Bluetooth AV/HS Audio". After the configuration, restart the Media Player and you can listen to the Music.

### **Volume control**

To adjust a volume you can press the Volume up or Volume down at any time, the display will show the volume Indication bar for few seconds.

**Warning:** Feedback, echo or noises can take place while conversing if the volume is set up too high

**Note:** During this operation - Never press the V+ and V- at the same time, as the Hotkey function will be activated.

**Taking / Refusing a call**

LCD will display caller's name and number, providing that number has been transferred into the Alpha Base Phone book. Please note that the name will only be displayed, if the stored Number and the receiving Number, are exactly the same. Press Answer (Button 1) to accept a call. Press Call ending (Button 2) to refuse a call.

**Taking / rejecting a further conversation on the second mobile phone**

During a conversation on the first mobile phone, a phone call is received on the second phone, it is indicated with an audio signal from the Alpha Base. If the call is accepted (key 1), the call on the first mobile phone is interrupted but the connection maintained. Once the second call is completed, the first conversation will be automatically restored and can be continued. If the second call is rejected (key 2), the caller hears a "busy-signal". The first conversation can continued without interruption.

**Outgoing calls**

If a call is being made from one of the mobile phones while a conversation is taking place on another, the ongoing conversation is interrupted but the connection maintained. Once the second conversation is completed, the first conversation will be automatically restored and can be continued.

**Microphone Mute**

To Mute the Microphone during an active Phone call, simply press the Menu Button (Button Nr 3) and the Microphone will be cut off and not able to transfer any speech to the other party. To activate the Microphone, please press the Menu down button (Button 3) again and the other party can now hear you speaking.

**Voice dialling function**

Make sure that your mobile phone accepts voice dialling. Activate the voice dialling function of your mobile



phone first and record the voice commands. Press button 1 in standby mode for 2 seconds. Once you hear a beep, speak the stored name and the corresponding stored number will be dialed.

### **Re-dial of the last dialed number**


With key 3, select the phone for which you want to repeat the last number called ( "A" or "B"). While in standby mode press the re-dial button (2) for 2 seconds. The last called number on the selected mobile phone is automatically dialed.

### **Private mode Call transfer to Mobile**

During an active Phone call Press the Answer Button (Button 1) to transfer a call from Hands free Alpha Base to your Handset.

Press the Answer button (button 1) to return to your hands free function

### **Battery status**



If the charge of the batteries is low, you will be warned by a flash of the indicator and a BiBiBiBi sound. There is a  icon displayed on the LCD.

**Note:** Low battery state can cause malfunctioning. A warning signal sounds.

### **Battery charging**

The Alpha Base use 3 rechargeable AAA batteries. The batteries are not fully charged when you unpack the Alpha Base.

We recommend that you fully **charge the batteries for a minimum of 6 hours before first use.**

There is a  icon displayed on the LCD while charging. Once the batteries are fully charged, the fully battery  icon displayed on the LCD .

**Warning:**

1. Please, never open the Alpha Base yourself, please get in touch with your local service partner.
2. The temperature range for use is between -10°C and +40°C. Use at other temperatures damages the device.
3. Only charge the Alpha Base with the charger delivered with the Alpha Base .

**Battery warning!**

Never use Alkaline Batteries!

Never Charge Alkaline batteries or mix Alkaline batteries with Rechargeable batteries

- charge the batteries before use
- never charge Alkaline Batteries
- Danger of explosion if exposed to open fires
- If your eyes get in contact with battery liquid, wash out the eyes with clear water immediately and contact your doctor.
- Do not open batteries
- Do not put batteries in contact with liquid
- Do not short-circuit batteries, nor put them in contact with metal.
- Do not mix different types of batteries, nor new with old
- Temperature range of use - 0°C up to max. 60°C
- Keep batteries away from children
- Do not put batteries in your mouth
- Do not dispose of the batteries in the domestic rubbish.

**Please note:**

"You are as driver responsible for having your vehicle under control at all times...

You should while driving, never converse through your mobile phone, write or read SMS or look at MMS.

Surveys have revealed that drivers are a higher security risk when telephoning while driving. We advise you strongly, as a driver, to use a handsfree device while driving and to stop your vehicle before having important conversations on your mobile phone".

### **Maintain the Alpha Base**

- Always keep the Alpha Base in a safe place and turn off when not in use..
- Keep it away from water, dirt, dust and humidity, If it gets wet, then immediately clean and allow to dry completely before using
- Do not store the Device in High temperature over 70 Deg Cel. Or 165 Deg F.
- Do not drop or shake the device.

### **Warranty and parts replacement**

**Dear customer,**

Our products are subject to a strict quality control. However, should you have problems, please contact your seller. You will then be helped rapidly.

***Please note :***

- The warranty is limited to the original purchaser.
- A copy of your receipt or other proof of purchase is required. Without proof of purchase, your warranty is defined as beginning on the date of manufacture as labeled on the products.
- The warranty is void if the serial number, date code label or product label is removed, or if the product has been subject to physical abuse, improper installation, modification, or repair by unauthorized third parties.
- The responsibility for our products is limited to the repair or replacement of the product at our discretion.
- All warranty on our products is limited to two years from the date of purchase.
- Specifically exempt from any warranty are limited-life consumable components subject to normal wear

and

tear, such as microphone, decorative finishes, batteries, and other accessories.

- We are not liable for any incidental or consequential damages arising from the use or misuse of any our products.
- This warranty gives you specific rights but you may have other rights depending on your location.
- Unless otherwise instructed in the user guide, the user may not, under any circumstances, attempt to perform service, adjustments or repairs on this unit, whether in or out of warranty. It must be returned to the sales outlet, factory or authorized service agency for all such work.
- We do not assume any responsibility for any loss or damage incurred during shipping. Any repair work on our products by unauthorized third parties nullifies any warranty.

