

**B-Speech<sup>®</sup>**  
Micra

**User Manual**  
**Benutzerhandbuch**  
**Manuel d'utilisation**  
**Modo de uso**  
**Příručka pro uživatele**  
**Manualul utilizatorului**



**B-Speech<sup>®</sup>**  
Micro



## Congratulations

Congratulations on your purchase of the Micra Bluetooth® headset. This headset allows you to communicate wirelessly through your mobile phone and includes a built-in microphone and earphone. It uses Bluetooth® 2.0 technology, but is also compatible with mobile phones using Bluetooth® version 1.1 technology. Your B-Speech® Micra Bluetooth® headset uses a built-in Lithium Polymer rechargeable battery, with long life.

## Package Contents

- Headset B-Speech® Micra
- Ear hook
- AC adaptor
- colored changeable clips
- User guide

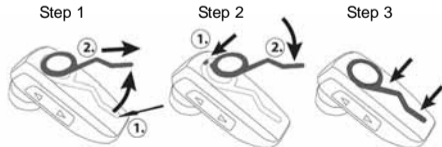
## Headset Features



The headset can be worn on either ear. Just clip the ear hook onto the preferred side.



## The coloured clip exchange



## Charging the internal battery

Before using your headset, please charge the internal battery. To charge the battery:

1. Connect the AC adaptor to an electrical outlet.
2. Plug the adaptor's connector into the charging port (see below).



3. While charging, the red LED light will stay on and turn off when charging is complete. You can then unplug the adaptor's connector from the headset and disconnect the adaptor from the electrical outlet.

4. During normal use you see the red LED blinky, please charge the Headset
5. Charging time is about 3,5 hours

## Switching the headset on or off

### To switch on:

Press and hold the talk key for 9 seconds until the blue LED turns on.

### To switch off:

Press and hold the talk key for 3 seconds until the red LED flashes.

## Pairing Procedure

Your B-Speech® Micra Bluetooth® headset needs to be paired to your mobile phone before it can be used. This is a two-part process; one part is carried out on the headset and the other is carried out on the mobile phone.

Note that different mobile phones use a different method to go through the pairing process.

### To pair your MICRA Bluetooth® headset:

1. With your headset turned off, press and hold the talk key 10

The LED will alternate rapidly between blue and red, which indicates that the headset is in pairing mode.

2. Use your phone's menu to search for Bluetooth® audio devices. The phone should indicate it has found the B-Speech® Micra headset. Confirm that you want to pair your mobile phone and headset together. If you are unsure how to go through the pairing process on your mobile phone, please consult its user manual.
3. When asked for a pin key, enter: "0000". Your phone will confirm that pairing has been successful.

*Note that there is usually a time limit to pair devices,*

## Phone call use

### Making a call from the mobile phone

While your mobile phone is paired with your headset, you can use the mobile phone to make phone calls in the same way as normal. The only difference will be that the earphone and microphone functions of the headset will be used instead of the phone's.

### Voice dialing through the headset

In order to use the voice dial feature of your headset, your phone must support voice dialing and must have voice tags stored.

### To use voice dialing:

1. Switch the headset on and pair it with your phone, if this is not already the case.
2. Press talk key shortly
3. You will hear a short tone. Say the voice tag immediately.
4. Your phone will make the call.

### Last number redial

When the headset is in standby mode (not in conversation), press the volume + key 1 second, and your phone will redial the last number that you called.

*Note: This function only works on Bluetooth® phones that support the Hands-free profile*

### Answering a call

When someone calls you, a ring tone will sound in your headset. To answer the call, press the talk key.

*Note that you can set your mobile phone to automatically answer calls, meaning that you do not even need to press the talk key. Please refer to your mobile phone's user guide for more information about this setting.*

### Transferring a single call

When activating a call, you can press the talk key 1 to 2 second to switch the conversation between the head-set and the mobile phone.

### Ending a call

During a call, press the talk key to hang up. If the other person hangs up first, then the call will end automatically.

### Adjusting the volume

- To increase the volume, press shortly the increase volume key.
- To decrease the volume, press shortly the decrease volume key.

### Bluetooth® headset specification

Compatible with Bluetooth® Ver.2.0 or 1.2 devices	
Maximum distance	30 Feet (10 meters)
Weight of headset	Approximately 7,5 grams
Typical standby time	up to 200 hours
Typical talk time	up to 4 hours
Typical re-charge time	3,5 hours
Battery type	Lithium Polymer rechargeable

### Registration and Safety

#### Certification/General Information

This device bears the CE symbol as specified by the provisions of Directive R & TTE (99/5/EC). B-Speech hereby declares that this device is in compliance with the basic requirements and other relevant guideline and regulations of the 1999/5/EC guideline.

You will find the declaration of conformity in the Internet at <http://www.b-speech.com>.

#### Note on environmental protection:



After the implementation of the European Directive 2002/96/ EU in the national legal system, the following applies: Electrical and electronic devices may not be disposed of with domestic waste. Consumers are obliged by law to return electrical and electronic devices at the end of their service lives to the public collecting points setup for this purpose or point of sale. Details to this are defined by the national law of the respective country. This symbol on the product, the instruction manual or the package indicates that a product is subject to these regulations. By recycling, reusing the materials or other forms of utilizing old devices, you are making an important contribution to protecting our environment.