

User manual
for
B-Speech Linga
TTS Stereo Bluetooth-Hands free

Index

Conformity Declaration	3
Federal Communications Commission (FCC) Statement.....	5
FCC RF Radiation Exposure Statement.....	5
Short introduction in the wireless technology Bluetooth.....	6
1. Package Content.....	7
2. Features.....	7
3. Overview.....	8
3.1. LED-Functions.....	8
4. Installation.....	8
5. Get started.....	9
5.1. Charge the battery.....	9
5.2. Power On/Off.....	9
5.3. Language Selection.....	9
5.4. Pairing.....	9
5.5. Multi-connecting.....	10
5.5.1. Setting-up connection.....	10
5.5.2. Make/Reject a call.....	10
5.6. Volume control.....	11
6. The menu.....	11
6.1. Main Menu.....	11
6.1.1. Phone book.....	11
6.1.2. Phone book download.....	12
6.1.3. Delete Phone book.....	12
6.1.4. Set up Speed Dial.....	12
6.1.5. Language Selection.....	12
6.2. Hot Key Menu.....	13
6.2.1. Speed Dial.....	13
6.2.2. Missed Calls.....	13
6.2.3. Media player.....	13
7. Call options.....	13
8. Use with a Bluetooth enabled Computer.....	14
9. Software Update.....	16
10. Troubleshooting.....	18
11. Safety Informations.....	19

Conformity Declaration

ES:

"B-Speech® declara que este aparato lleva el signo CE según los requisitos y disposiciones pertinentes de la Directiva R&TTE (1999/5/CE). Cumple todos los requisitos fundamentales y reglamentos y disposiciones de la Directiva 1999/5/CE.

La declaración de conformidad entera se encuentra en www.b-speech.com."

PT:

Por este meio a B-Speech® declara que este aparelho recebeu a marca CE, segundo as disposições e os procedimentos previstos pela directiva europeia R&ETT para equipamentos de rádio e equipamentos terminais de telecomunicações (1999/5/CE). O aparelho está assim em conformidade com as exigências fundamentais e respectivas normas e regulamentos da directiva 1999/5/CE.

Na página www.b-speech.com poderá ser consultado o texto integral da declaração de conformidade.

I:

Con la presente la B-Speech® dichiara che il presente apparecchio riporta la denominazione CE ai sensi delle direttive e prescrizioni della normativa R&TTE (1999/5CE). Esso si trova così conforme ai requisiti fondamentali, nonché alle corrispondenti regolamentazioni e prescrizioni poste dalla direttiva 1999/5CE). Visitando il sito www.b-speech.com troverete la completa dichiarazione di conformità.

F:

B-Speech® déclare par la présente que cet appareil porte les signes CE conformément aux dispositions et aux normes de la directive R&TTE (1999/5/CE). Il répond ainsi aux exigences fondamentales, aux règlements correspondants et aux dispositions de la directive 1999/5/CE. Vous trouverez la déclaration de conformité complète sur le site Web www.b-speech.com.

GB:

B-Speech® declares herewith that this device carries the CE mark in accordance with the regulations and standards of the guideline R&TTE (1999/5/EG). It conforms with the fundamental requirements, the appropriate regulations and rules of the guideline 1999/5/EG. You can find the complete declaration of conformity under www.b-speech.com.

D:

Hiermit erklärt B-Speech®, dass dieses Gerät die CE-Kennzeichnung gemäß den Bestimmungen und Vorgaben der Richtlinie R&TTE (1999/5/EG) trägt. Es entspricht somit den grundlegenden Anforderungen, den entsprechenden Regelungen und Vorschriften der Richtlinie 1999/5/EG.

Unter www.b-speech.de finden Sie die komplette Konformitätserklärung.

SW:

Härmed deklarerar B-Speech att produkten är CE märkt, och överensstämmer med standarden och direktiven för R&TTE (1999/5/EG). Denna produkt uppfyller kraven för 1999/5/EG.

Du kan hitta mera information under www.b-speech.com.

CZ:

Dovozce značky B-Speech® tímto prohlašuje, že tento produkt označený značkou CE je ve shodě a splňuje podmínky ujednání o radiových a telekomunikačních koncových zařízeních a směrnice 1999/5/EG (R&TTE Directive).

Tento produkt vyhovuje požadavkům a ostatním příslušným ustanovením nařízení 1999/5/EG. Úplné prohlášení o shodě naleznete na www.b-speech.com.

Federal Communications Commission (FCC) Statement

15.21

You are cautioned that changes or modifications not expressly approved by the part responsible for compliance could void the user's authority to operate the equipment.

15.105(b)

This equipment has been tested and found to comply with the limits for a Class B digital device, pursuant to part 15 of the FCC rules. These limits are designed to provide reasonable protection against harmful interference in a residential installation. This equipment generates, uses and can radiate radio frequency energy and, if not installed and used in accordance with the instructions, may cause harmful interference to radio communications. However, there is no guarantee that interference will not occur in a particular installation. If this equipment does cause harmful interference to radio or television reception, which can be determined by turning the equipment off and on, the user is encouraged to try to correct the interference by one or more of the following measures:

- Reorient or relocate the receiving antenna.
- Increase the separation between the equipment and receiver.
- Connect the equipment into an outlet on a circuit different from that to which the receiver is connected.
- Consult the dealer or an experienced radio/TV technician for help.

Operation is subject to the following two conditions:

- 1) this device may not cause interference and
- 2) this device must accept any interference, including interference that may cause undesired operation of the device.

FCC RF Radiation Exposure Statement

This equipment complies with FCC radiation exposure limits set forth for an uncontrolled environment. End users must follow the specific operating instructions for satisfying RF exposure compliance. This transmitter must not be co-located or operating in conjunction with any other antenna or transmitter.

Short introduction in the wireless technology Bluetooth.

Bluetooth is a wireless communication technology with short range. It enables a wireless communication between devices with Bluetooth interfaces, such as mobile phones, Personal Digital Assistants (PDA), Desktops and Notebooks, input / output devices (mouse, keyboard, printer) and domestic appliances. Bluetooth complies with the world wide standards for radio operating in the ISM-Band (industrial, scientific and medical frequency band). Within the ISM-Band (2,4 GHz to 2.48 GHz) Bluetooth can jump 1,600 time per second between 79 different frequencies with a range up to 10 meters (Class II).

B-Speech Linga Handsfree-Bluetooth system

B-Speech Linga is a Stereo Handsfree Bluetooth - device, which has been equipped with Bluetooth technology Version 2.0 and the latest TTS (Text To Speech) Technology which announces instructions for the users in multiple languages. It also announces the status of the Bluetooth device as well as the name (or phone number, if the contact has not yet been downloaded) of the incoming caller and many more.

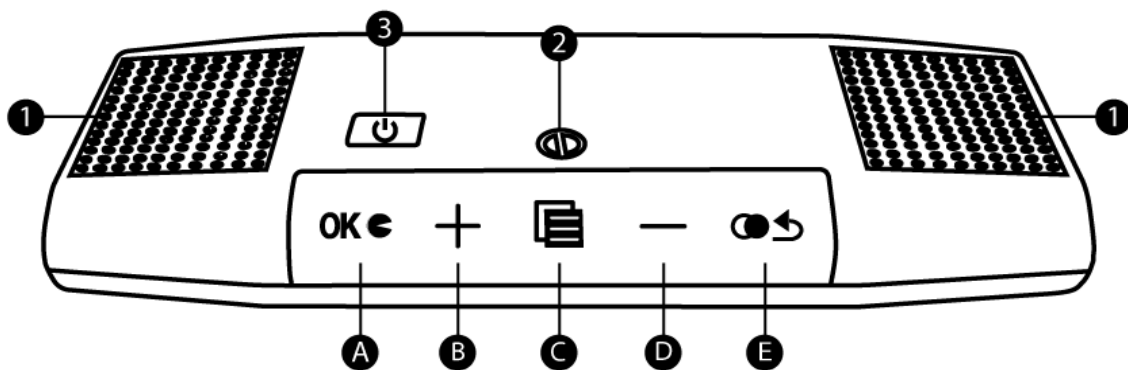
1. Package Content

- B-Speech Linga
- Sun visor clip
- USB Charger Cable
- Multilingual Visual Guide

2. Features

- Text-to-Speech controlled User Menu & Caller name announcement**
- Sensor-Touch control**
- Multi-connecting function for 2 Mobiles at the same time. And memory for 8 paired devices**
- Automatic phone book download to store up to 1500 contacts**
- Supports A2DP/AVRCP/Headset/Handsfree Bluetooth profile
- Speed dial function for 10 Contacts
- 50 Memories for the missed calls
- Multilingual Speech (English, German, Italian, French, Spanish, Russian/Mandarin)
- 2x built in Multimedia Speakers, each 2 Watts
- Two digital Amplifiers
- Supports voice dialling
- Re-dial of the last dialled phone number
- DSP (Digital Signal Processor) to decrease noise and echo
- Full Duplex
- Supports different music sources and Mobile Function
- Compatible with all Bluetooth Devices
- Firmware-Upgrading Interface
- 12 Hours Talk time
- 12 Days Stand-by
- Stylish German Design
- Bluetooth Version 2.0 (Class II)
- Size: 138mm wide x 50mm deep x 12mm height

3. Overview



1. Speakers
 2. Microphone
 3. Multifunction button
- Sensor-Touch control panel
- A OK / Voice dial
 - B Volume + / Forward
 - C Main Menu
 - D Volume - / Backward
 - E Return / Redial
5. Reset button (not pictured)
 6. Magnetic clip holder (not pictured)
 7. USB charging port (not pictured)

3.1. LED-Functions

Status	LED
Not connected	Blue LED(C) all 3 seconds.
Menu/TTS announcement/Incoming Call	All LEDs on Sensor Touch pad constantly
Touchpad activity	Green LED(3)
Pairing	Red(3) and Blue(C) alternatively.
Connected	Blue LED(C) twice all 3 seconds.
Charging/Low battery	Red LED(3) constantly
New missed call	Blue LED(C) constantly

4. Installation

Fasten the sun screen clip at the back of the B-Speech Linga.

The B-Speech Linga can now be clipped over the side of the sun visor.

5. Get started

5.1. Charge the battery

The B-Speech Linga is equipped with a internal rechargeable Lithium-Ion battery.

Plug in the charger into the USB port of the B-Speech Linga

When the B-Speech Linga is charging, the red LED will light

The red LED will turn off after the battery is fully charged

After the device is fully charged, please disconnect the charger.

If the charge of the batteries is low, you will Hear “Battery Low, please charge” and the Red LED under the Hot key Button will start to blink.

Note: Please charge the battery for a minimum of 3-4 Hours before using for the first time.

5.2. Power On/Off

To turn on your B-Speech Linga, press and hold the **Multifunction button** for minimum three seconds until you hear “Power On” followed by a “Beep”.

To turn off your B-Speech Linga, press and hold the **Multifunction button** for at least seven seconds until you hear “Power Off”.

Note: In case your B-Speech Linga does not respond on keystrokes, please push the Reset Button underside your car kit.

5.3. Language Selection

After starting the B-Speech Linga, you can select your language.

Please touch the **Main Menu** symbol five times at intervals of 1 second till you hear “Select Language”.

Touch **OK** to confirm your selection.

Touch **+** or **-** to scroll through the available languages

Touch **OK** to save your selected language and return to the standby menu.

5.4. Pairing

The B-Speech Linga and your mobile phone must be paired before being used together.

Turn on the B-Speech Linga and hold down the **Multifunction button** for 3 more seconds, you will hear “Please pair Bluetooth phone. Enter Pin code 1234”

The blue and red LED will blink alternately, the B-Speech Linga is now in pairing mode and can be found by your mobile phone.

Activate the Bluetooth function of your mobile phone and follow the pairing procedure according to your Handsets

manual. The B-Speech Linga will be found by your mobile phone. Choose “Linga” from the list displayed on your mobile phone. Your phone will ask for the pairing code. Enter “**1234**”.

Note: The Pairing mode is activated for 3 Minutes.

After successful pairing, you will hear “Pairing complete”

If the pairing process fails, repeat the process. Once the connection is successful, the B-Speech Linga is ready to use.

Note: Some Handsets needs to be connected after pairing and require authorisation.

Please follow your handsets manual for these additional steps.

The B-Speech Linga will automatically try to connect to the mobile phone.

The Blue Led at the Menu Button, will blink twice a second after successful Connection .

You will hear “Connected to”, followed by your phones name.

Note: If the B-Speech Linga loses it's connection to the mobile phone, simply touch Return on the control panel.

5.5. Multi-connecting

The B-Speech Linga can be used by two mobile phones at the same time through the new Multi-connecting technology. This is ideal for users with more than one mobile phone.

5.5.1. Setting-up connection

To use the second phone, it is necessary to pair the second phone and connect it with the B-Speech Linga. To pair the second phone, simply repeat the pairing process as described under chapter 5.4.

To connect the both phones to the car kit, touch **Return** on the control panel.

The B-Speech Linga will now try to connect to the two last paired mobile phones.

Note: To use the Multi-connecting feature the first mobile phone have to be first paired and connected.

5.5.2. Make/Reject a call

The B-Speech Linga supports dialling from the phone book, missed calls list and the Speed Dial function.

To dial out, simply select a contact and touch **OK** to dial.

When using Multi-connecting, the last used phone will be used to dial. If you wish to use the second phone, you'll have to activate it. Simply touch **Main Menu** for three seconds. You'll hear “Connected to” followed by the phones name.

Note: The Bluetooth connection of the inactive mobile phone will be disconnected, during a phone call and the incoming calls of the inactive mobile phone will not go trough the B-Speech Linga.

The B-Speech Linga will automatically reestablish the connection to both mobile phones, 3 seconds after the phone call.

If someone is calling you, you'll hear the number or name if it's stored in the phone book unless the number is not suppressed.

Note: It is not possible to have two active phone calls at once. Please finish the active call. The B-Speech Linga will automatically reestablish the connections after three seconds.

5.6. Volume control

To adjust the volume of the TTS voice output, an active call, or music streaming you can touch + or – on the control panel.

Shortly touch + to increase the Volume (a “Beep” signal will indicate max. Volume).

Shortly touch – to decrease the Volume (a “Beep” signal will indicate min. Volume).

Note: Feedback, echo or noises can take place while conversing at a high volume level specially by using the car kit in loud environments

6. The menu

The TTS menu of the B-Speech Linga is logically designed, which means the common used menu entries are easy and fast to access.

The B-Speech Linga features two separate menus

6.1. Main Menu

The Main Menu of the B-Speech Linga is accessible using the Main Menu-symbol on the touch sensitive-control panel.

6.1.1. Phone book

The phone book of the B-Speech Linga stores up to 1500 names and numbers in alphabetical order.

To get to the phone book menu, simply touch **Main Menu** on the control panel and confirm your selection with **OK**.

To select a contact you first have to choose the letter of the contacts name. Touch + or – to select the letter and **OK**, to confirm your selection.

The B-Speech Linga will now tell you the first contact of the selected letter stored in your phone book.

To scroll through the phone book, simply touch + or – on your control panel.

As one contact can have multiple numbers such as mobile phone and home, you can view the number of your contact by touching **Main Menu**. Touch **OK** to dial the number. You can go back to the stand-by mode by just touching **Return**.

Note: To view and use the contacts, you first have to download them into the memory of the B-Speech Linga described at chapter 6.1.2

6.1.2. Phone book download

To download phone contacts to the B-Speech Linga, simply touch **Main Menu** for two times at intervals of 1 second on the control panel and confirm your selection with **OK**. The B-Speech Linga will now try to automatically download the contacts stored in your phone. Do not press any key on your phone and the B-Speech Linga during the transfer. This can cause data loss so you might have to start over again. After the transfer is completed, you'll hear "Phone book loading completed". To return to the Stand-by menu, touch **Return**.

If the B-Speech Linga is saying to transfer the contacts manually, the automatic transfer is not supported by your phone. In this case you have to transfer the contacts directly using your mobile phone. On most phones you have to enter the contacts menu, select the contacts you wish to transfer and send them by Bluetooth to your B-Speech Linga. Otherwise please refer to your mobile phone's instruction manual.

The B-Speech Linga will now disconnect all other connections to avoid any interference.

After the transfer is completed, touch **Return** to complete the process.

The contacts from your phone are now saved inside the memory of the B-Speech Linga and are ready to use.

6.1.3. Delete Phone book

In the main menu you have the ability to delete the contacts stored in the phone book. To get to this function touch **Main Menu** for three times at intervals of 1 second till you hear "Delete Phone book".

Touch **OK**, to confirm your selection. You will be asked to confirm the deletion of the Phone book.

Please note that this function will delete the entire phone book, missed calls and Speed Dial entries permanently.

Touch **OK** to confirm.

After the process you will hear "Phone book deleted".

6.1.4. Set up Speed Dial

The B-Speech Linga supports to store 10 contacts for fast access. To transfer these contacts, simply touch **Main Menu** for four times at intervals of 1 second till you hear "Set up Speed Dial". Touch **OK** to confirm your selection. On most phones you have to enter the contacts menu, select the contacts you wish to transfer and send them by Bluetooth to your B-Speech Linga. Otherwise please refer to your mobile phone's instruction manual.

The B-Speech Linga will now disconnect all other connections to avoid any interference.

After the transfer is completed, touch **Return** to complete the process.

The contacts from your phone are now saved inside the memory of the B-Speech Linga and are ready to use.

6.1.5. Language Selection

The B-Speech Linga supports seven languages for the menu, status messages and caller names.

To select the language you wish to use, simply touch **Main Menu** five times at intervals of 1 second till you hear "Select Language". Touch **OK** to confirm your selection. Touch **+** or **-** to scroll through the available languages.

You can choose from British English, Italian, Spanish, French, German, and Russian/Mandarin.

Touch **OK** to save your selected language and return to the standby menu.

6.2. Hot Key Menu

6.2.1. Speed Dial

To access the stored Speed Dial contacts, shortly press the **Multifunction Button**.

You will hear "Speed Dial". Touch **+** or **-** to scroll through the stored contacts. If you wish to hear the number of the respective contact, touch **Main Menu**. Use **OK** to dial the number or **Return** to return to stand-by.

6.2.2. Missed Calls

The B-Speech Linga stores up to 50 missed calls. If you cannot accept a call the B-Speech Linga will save the information in the missed calls list and visualises this using the blue LED on the touch-panel. To view the list simply press the **Multifunction Button** two times at intervals of 1 second till you hear "Missed Calls". Touch **+** or **-** to scroll through the missed calls. If you wish to hear the number of the respective contact, touch **Main Menu**.

Use **OK** to dial the number or **Return** to return to stand-by. After you viewed the missed calls, the blue LED will turn off.

Note: Calls from a suppressed number won't be saved.

6.2.3. Media player

The B-Speech Linga is equipped with 2 multimedia speakers with each 2 watts and a digital amplifier which provides an excellent sound in car, office and on the road. To enter the media player simply press the **Multifunction Button** three times at intervals of 1 second till you hear "Media Player".

Before you use the Media player, please make sure your mobile phone is connected to the B-Speech Linga.

The media player supports to play and pause the current track as well as to play the next and previous track.

Shortly touch **Main Menu** to pause.

Shortly touch **OK** to play the next track.

Shortly touch **Return** to play the previous track.

Shortly touch **+** to increase the Volume (a "Beep" signal will indicate max. Volume).

Shortly touch **-** to decrease the Volume (a "Beep" signal will indicate min. Volume).

To return to the stand-by menu, press the **Multifunction Button** once.

Note: In order to play stereo music through the B-Speech Linga, your mobile phone have to support the A2DP Bluetooth-profile. If you don't know if it's supported, please refer to your handsets manual.

7. Call options

The B-Speech Linga supports all basic phone functions as redialling the last used number, voice dial, microphone mute and to transfer the call to the handset.

To redial the last called number, touch **Return** for three seconds.

To start voice dial, touch **OK** for three seconds.

To mute the microphone for a running call, touch **Main Menu** for three seconds.

To transfer a running call, touch **OK** for three seconds. Use your mobile phone to send it back to the B-Speech Linga.

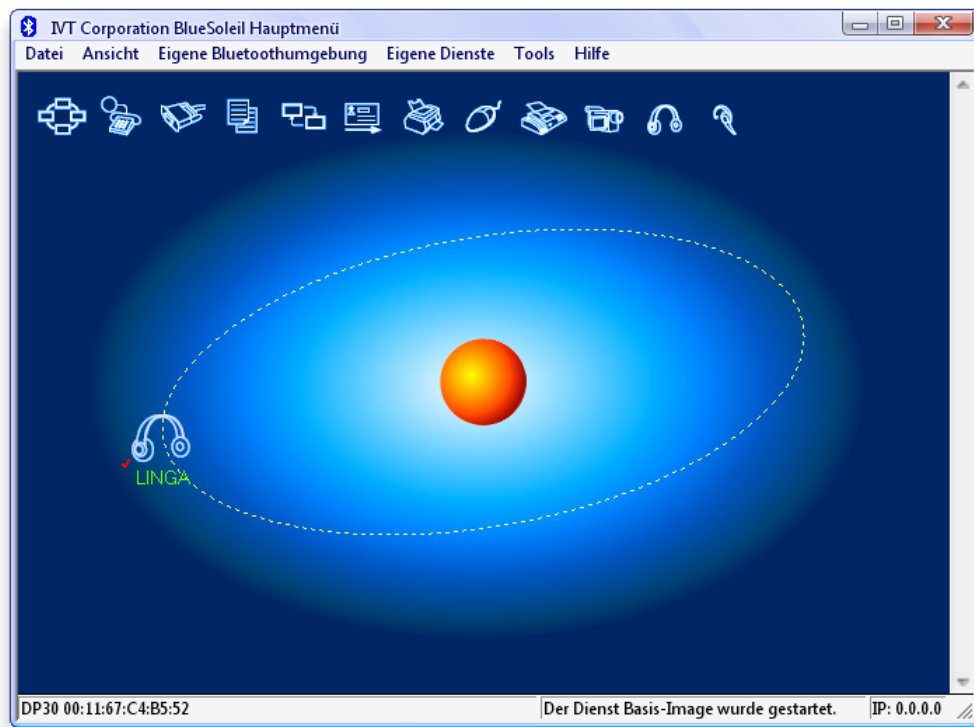
8. Use with a Bluetooth enabled Computer

You can use the B-Speech Linga with a Bluetooth enabled Computer for streaming stereo music, making calls through the Internet and transferring contacts.

This instruction describes how to use the B-Speech Linga with a B-Speech Bluetooth Dongle on a PC.

Open up the IVT Bluesoleil Software and search for new Bluetooth devices by clicking on the red dot in the middle of the window. Please make sure your B-Speech Linga is in pairing mode as described at chapter 5.4.

Double click the newly found “Linga” Bluetooth device. You’ll notice that the “Bluetooth Object Push Service”, “Advanced Audio Distribution Service” and “Headset Service” will highlight in yellow.



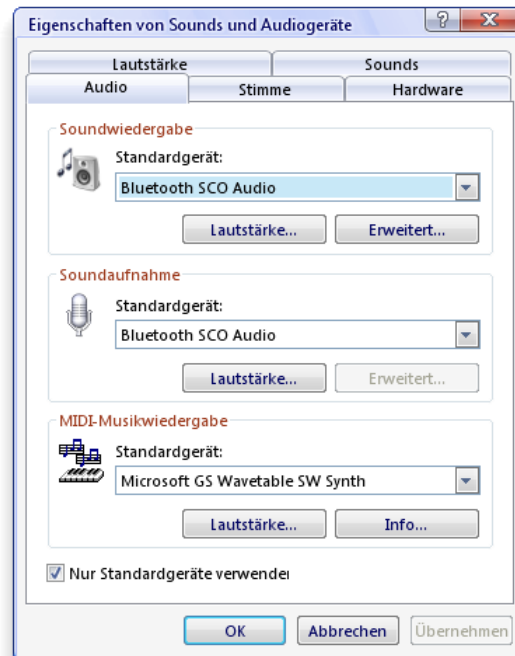
By clicking on “Bluetooth Object Push Service” your PC will transfer all contact inside the folder “My Documents\Bluetooth\outbox”

By clicking on “Advanced Audio Distribution Service” your computer will start the music streaming connection. You can use this to transfer all sounds from your PC to the B-Speech Linga, like music from your favourite media player. Please note that the music streaming only works before the music application was started.

If the music streaming does not work, please start the “Sounds and Audio Devices Properties” by going to Start --> Settings --> Control Panels --> Sounds and Audio Devices Properties. Select the “Audio” Tab.

Set the default “Sound playback” and “Recording” device to “Bluetooth AV Audio” if you selected the “Advanced Audio Distribution Service”.

Set the default “Sound playback” and “Recording” device to “Bluetooth SCO Audio” if you selected the “Headset Service”.



By clicking on “Headset Service”, the B-Speech Linga acts like someone is calling. Touch **OK**, on the B-Speech Linga to start the connection between the Computer and your B-Speech Linga.

Note: *If you are asked for a Pin-Code, enter “1234”.*

9. Software Update

To ensure the compatibility with new mobile phones and features, it is useful to upgrade the B-Speech Linga to the newest software version. Please follow the instructions as follows.

Download the newest software under www.b-speech.de/en/downloads.

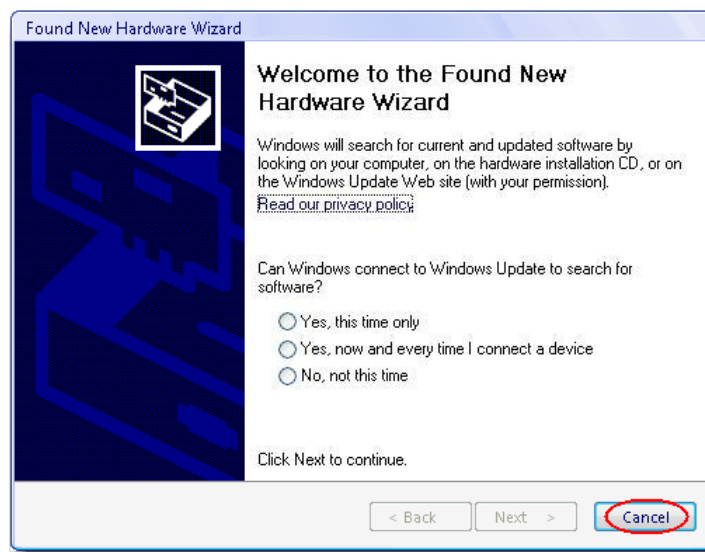
Connect the included USB-cable to the B-Speech Linga and your PC.

Power on the B-Speech Linga.

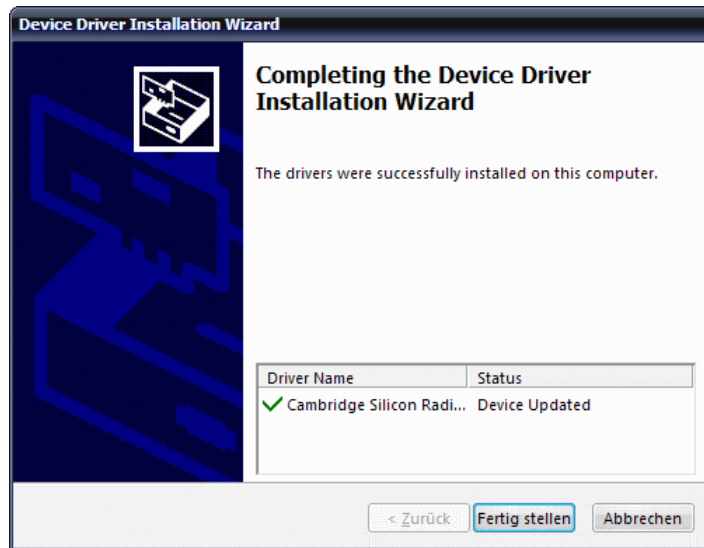
Press the Multifunction button for at least 13 seconds. You will hear that the B-Speech Linga will turn off and switch into the update mode. The currently installed software-version will be announced. Your PC will detect a new device plugged into your PC.



Cancel the Wizard for the new hardware and open the file "Driver Setup.exe" you find in the archive.



Please follow the instructions of the Device Driver Installation Wizard and close the wizard after successful installation



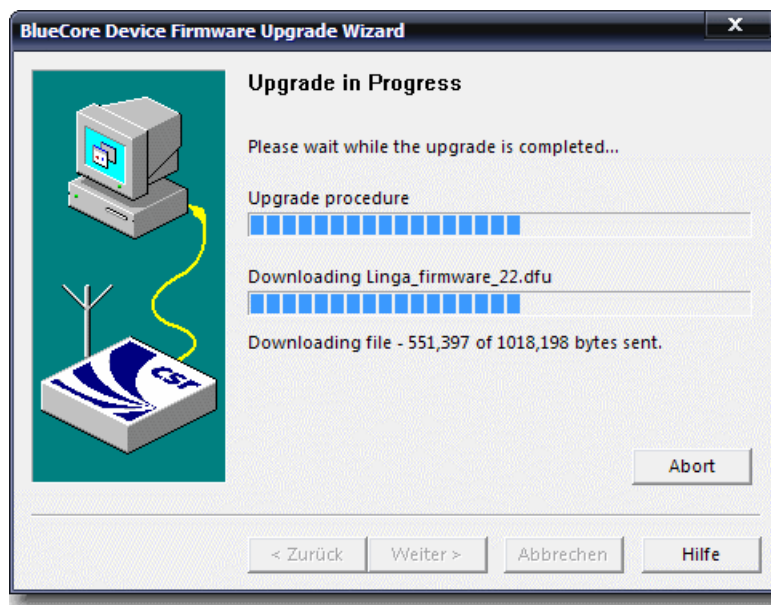
Open the file "Setup.exe" to install the Firmware updater for your B-Speech Linga and follow the installation instructions.

After the installation is finished, you have the choice to start the Software update immediately to upgrade your B-Speech Linga or do this later. Using the link whether on your desktop or the start menu.

Note: If you already installed the driver and Software you can skip these steps.

Make sure your Linga is connected and set to upgrade mode before starting the firmware updater.

If everything is correctly installed, the Update will run automatically.



The updating process will take about two minutes. Do not shut down your PC, the B-Speech Linga or interrupt the connection while the upgrade is in progress. This can cause serious damage to the device.

Note: The Update does not work on Computers running Macintosh, Linux and 64-Bit based Operating Systems.

10. Troubleshooting

In this chapter you find informations to solve problems with your car-kit.

Problem	Solution	Notice
Bluetooth-connection is lost	Remove any possible source of interference and mind the operating distance.	The operating distance for Bluetooth class 2 devices is 10 meters.
Re-/Voicedial does not work	Verify that your cell phone support the „hands-free“-Bluetooth-profile.	The „hands-free“-profile enables wireless telephony
Mediaplayer-control does not respond	Verify that your mobile phone support the „AVRCP“ and „A2DP“-Bluetooth-profile.	The „A2DP“-profile enables music-streaming. The „AVRCP“-profile enables the wireless control of the media player
Car-kit does not respond to keystrokes.	1) Verify that your car kit is powered on. 2) Shortly push the multifunction button 3) or push the reset button on the bottom side of the car-kit.	The Interruption of a transfer or TTS announcement caused by the mobile phone may cause stability problems
The battery won't be charged	Verify the charging cable is connected properly to the car-kit and that the red LED is flashing.	Further informations can be read under chapter 5.2 in this manual.
The car-kit cannot be found by the cell phone.	Verify that your car-kit is running in pairing-mode	
The complete name of a contact won't be announced.		The Name is limited to 24 characters. Any other character will be ignored.
Not all contacts will be transferred		1) Depending on the model only SIM or phone book contacts will be transferred to the car-kit. Further informations can be found in the manual of your cell phone. 2) The numbers of each contact is limited to 4. Any other numbers will be ignored.
The new firmware cannot be downloaded.		Verify the internet connection and try again later.
Error while upgrading firmware.	Verify that the car-kit is properly connected to the PC by the USB-cable and that the car-kit is in the update-mode	

11. Safety Informations

Warning:

1. Please, never open the B-Speech Linga yourself, This will terminate the Warranty .
2. The temperature range for use is between –20°C and +50°C. Use at other temperatures damages the device.
3. Only charge the B-Speech Linga with the charger delivered with the B-Speech Linga.

Battery warning!

Danger of explosion if exposed to open fires + If your eyes get in contact with battery liquid, wash out the eyes with clear water immediately and contact your doctor. + Do not open batteries + Do not put batteries in contact with liquid + Do not short-circuit batteries, nor put them in contact with metal. + Do not mix different types of batteries, nor new with old + Temperature range of use – 20C up to max. 50°C + Keep batteries away from children + Do not put batteries in your mouth + Do not dispose of the batteries in the domestic rubbish.

Safety note: “*You are as driver responsible for having your vehicle under control at all times...*

You should while driving, never converse through your mobile phone, write or read SMS or look at MMS. Surveys have revealed that drivers are a higher security risk when telephoning while driving

We advise you strongly, as a driver, to use a hands free device while driving and to stop your vehicle before having important conversations on your mobile phone”.

Maintain the B-Speech Linga

- Always keep the B-Speech Linga in a safe place and turn off when not in use..
- Keep it away from water, dirt, dust and humidity, If it gets wet, then immediately clean and allow to dry completely before using
- Do not store the Device in High temperature over 70 Deg Cel. Or 165 Deg F.
- Do not drop or shake the device.

Warranty and parts replacement

Dear customer,

Our products are subject to a strict quality control. However, should you have problems, please contact your seller or www.b-speech.com . You will then be helped rapidly.

Please note :

* The warranty is limited to the original purchaser.

* A copy of your receipt or other proof of purchase is required. Without proof of purchase, your warranty is defined as beginning on the date of manufacture as labelled on the products.

- * The warranty is void if the serial number, date code label or product label is removed, or if the product has been subject to physical abuse, improper installation, modification, or repair by unauthorized third parties.
- * The responsibility for our products is limited to the repair or replacement of the product at our discretion.
- * All warranty on our products is limited to two years from the date of purchase.
- * Specifically exempt from any warranty are limited-life consumable components subject to normal wear and tear, such as microphone, decorative finishes, batteries, and other accessories.
- * We are not liable for any incidental or consequential damages arising from the use or misuse of any our products.
- * This warranty gives you specific rights but you may have other rights depending on your location.
- * Unless otherwise instructed in the user guide, the user may not, under any circumstances, attempt to perform service, adjustments or repairs on this unit, whether in or out of warranty. It must be returned to the sales outlet, factory or authorized service agency for all such work.
- * We do not assume any responsibility for any loss or damage incurred during shipping. Any repair work on our products by unauthorized third parties nullifies any warranty.